



TOKYO  
METROPOLITAN  
UNIVERSITY



作成 2024

## ● Location – Tokyo, Japan



- Minami-Osawa Campus
- Hino Campus
- Arakawa Campus

From Haneda/Narita International Airport  
Direct transportation to Minami-Osawa is available.



### <台本>

TMUは日本の東京に、南大沢キャンパス、日野キャンパス、荒川キャンパスの3つのキャンパスがあります。

すべての学部生は、1年次から南大沢キャンパスで学生生活を送ります。

ほとんどの学部は、4年生まで南大沢キャンパスで学びますが、その後、メインキャンパスが変わる学部もあります。

システムデザイン学部は、主に3年次から日野キャンパスで学びます。健康科学部は2年次から荒川キャンパスになります。

Tokyo Metropolitan University has three campuses: Minami-Osawa Campus, Hino Campus, and Arakawa Campus.

All undergraduate students spend their first year of student life at the Minami-Osawa Campus.

Most faculties of students attends the Minami-Osawa campus until their fourth year.

Some faculties change their main campus after that.

The Faculty of Systems Design mainly spends its third year and above at the Hino Campus.

The Faculty of Health Sciences spends their second year and above at the Arakawa Campus.

## ● Location – Tokyo, Japan



### **Learning and Living in an International Metropolis :**

Tokyo is renowned as a global city where diverse cultures and languages converge. You'll have ample opportunities for cross-cultural exchange, broadening your global perspective.

### **Safe and Comfortable Living Environment :**

Tokyo is globally recognized as one of the safest cities. With excellent public safety measures and well-maintained public facilities and transportation systems, students can live comfortably and with peace of mind. Moreover, access to and from various countries around the world via Narita and Haneda airports is smooth.

### **Career Opportunities :**

Tokyo serves as the economic and cultural hub of Japan, attracting numerous companies and institutions. Students have abundant opportunities for employment and internships, allowing them to carefully consider their future careers.

### **Diversity in Culture and Entertainment :**

Tokyo is a city where traditional and contemporary Japanese cultures coexist. With various entertainment options such as museums and theaters, students can enjoy a diverse range of cultural experiences and leisure activities.

### 国際都市での学びと生活:

東京は世界的に有名な国際都市であり、異文化交流の機会が豊富で、グローバルな視野を広げることができます。

### 安全・快適な生活環境:

東京は世界的にも安全な都市の一つとして知られています。治安が良く、公共の施設や交通機関も整備されており、学生が安心して暮らすことができる環境が整っています。成田空港や羽田空港を利用して世界各国との往来もスムーズです。

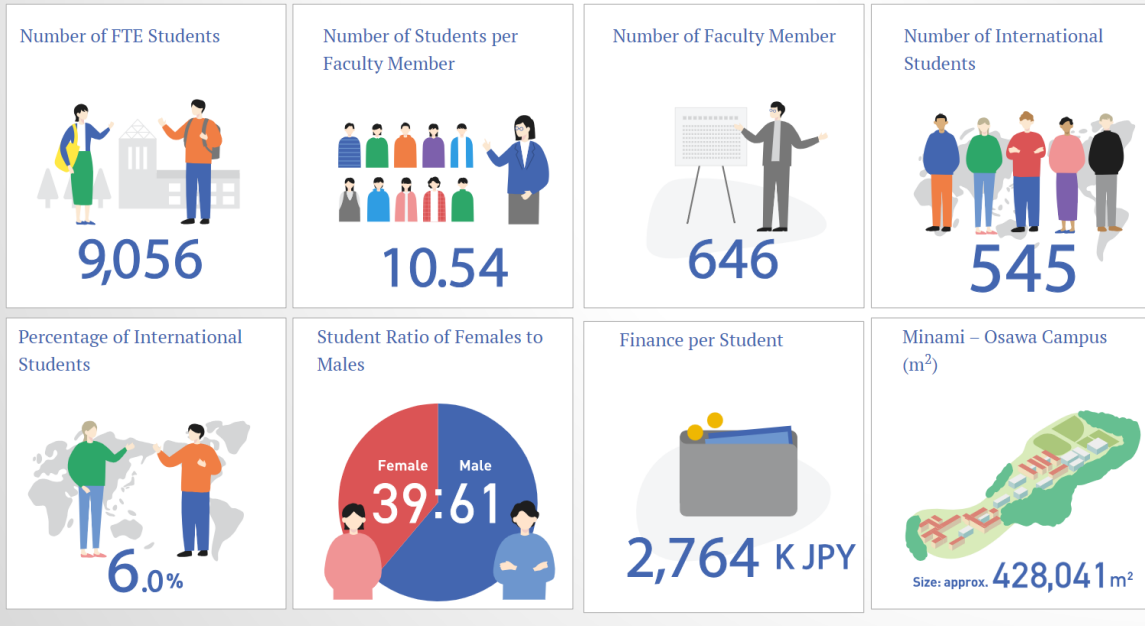
### キャリアの機会:

東京は日本の経済・文化の中心地であり、多くの企業や機関が集まっています。学生は就職やインターンシップの機会が豊富で、将来のキャリアについてじっくり考えることができます。

### 文化・娯楽の多様性:

東京は日本の伝統文化と現代文化が共存する都市です。美術館や劇場など、多彩な娯楽や文化体験を楽しむことができます。

## About TMU



This slide is showing some of the key points of TMU.

TMU has about 6800 undergraduate students and about 2200 graduate students for a total of 9056 students in attendance.

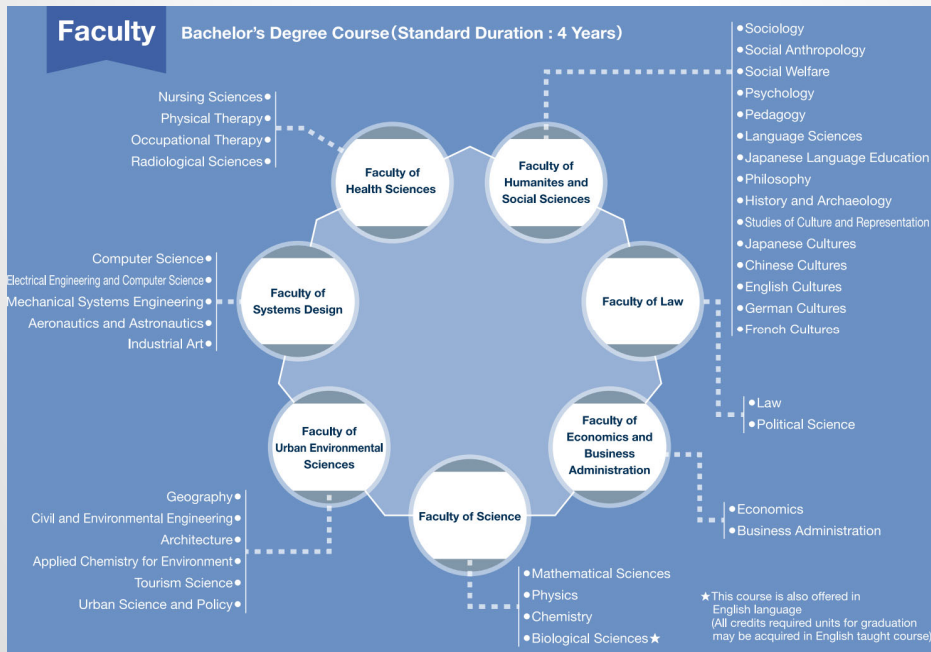
The number of students per faculty member is approximately 10.54, with 646 faculty members in attendance.

6.0 percent of the total student population is international students, numbering 545 in attendance. The student gender ratio is 39% female and 61% male.

The required funding per student is 2.76 million yen.

The Minami-Osawa campus has a vast area of 428 square meters.

# Study and Research Fields



本学は、文系学部・理系学部をあわせて7学部を有する中規模の総合大学です。

<台本>

Regarding Bachelor's Degree Course,

Ytp~tR jytutqfS%snjwny~ax%a jizr 2xji&tr uwjmjxn{j%snjwny~%| nm%  
 <%fhzqjx%shqzisl%mj%fhzq~%k%w%si%hnjshjx3

## ● Education at TMU



### Quality Education based on Research Prowess

- Small classes to allow individual student-teacher interaction.
- Opportunities for experiential education, [internships](#), [research and education abroad](#).

6

研究能力に基づく質の高い教育がTMUの特徴です。

生徒と教師が個別に交流できる少人数制クラスが多く設置されており、質の高い学習を行うことができます。

また、体験型教育、インターンシップ、海外での研究・教育の機会も充実しています。

Quality education based on research competence is a hallmark of TMU. Many classes are small, allowing for individual student-teacher interaction and high quality learning.

In addition, experiential education, internships, and opportunities for research and education abroad are available.

## ● Support for international student



### Support from International center

- Tutoring System
- Consultations for International Students
- Academic writing support
- Japanese language Classes
- Visa support



★参考場所：[Study at TMU :: Study at TMU | Tokyo Metropolitan University](#)

<台本>

こちらは、国際センターが実施している主な留学生へのサポートです。

1つ目は、「チューター制度」です。TMUでは、外国人留学生1年生を対象に、大学での学習や研究、日本での日常生活などをサポートするために、1対1のチューター制度を設けています。

2つ目は、「留学生相談室」です。留学生がキャンパス内外の日常生活で直面するさまざまな問題について、留学生アドバイザーが相談にのってくれます。

3つ目は、「アカデミックライティングサポート」です。TMU大学院生のスタッフが、1対1のディスカッションを通じて、留学生のアカデミックライティングスキル向上をサポートします。

4つ目は、「日本語授業」です。初級から上級（N5～N1+）までの日本語クラスを開講しているため、留学生の日本語レベルに応じた適切な学習が可能です。

5つ目は、「ビザサポート」です。TMUの私費外国人留学生は、ビザの取得や更新手続き、在留資格の変更などをサポートする「ビザサポート」を受けています。

<台本>

Here is the main support for international students provided by the International Center.

The first is "Tutoring System". TMU has a one-on-one tutoring system for first year international students to support their studies and research at the university, and daily life in Japan.

The second is "Consultations for International Students". An International student advisor gives advice to international students on a wide range of

problems they may encounter in their day-to-day life on and off camps. The third is “Academic Writing Support”. TMU graduate school student staff will assist international students to improve their academic writing skills through one-on-one discussion.

The fourth is “Japanese language Classes”. TMU provides Japanese language classes from beginner to advanced level(N5-N1+). We also offer Japanese workshops conducted in English, Chinese, and Korean.

The fifth is “Visa Support”. Visa Support for International Students Tokyo Metropolitan University helps privately funded international students coming to the university with visa acquisition and renewal procedures as well changes in their visa status.



## ● Support for international student

### Accommodation

- Student Dormitory
- International House
- International Student House



- 1 Student Dormitory
- 2 International House
- 3 International House
- 4 International Student House
- 5 Communal area (International Student House)

8

★参考場所 : [Study at TMU :: Study at TMU | Tokyo Metropolitan University](#)  
<台本>

留学生向けの宿舎も用意しています。

TMUには学生寮、国際学生宿舎、国際交流会館の3つの滞在施設があります。

Accommodations for international students are also available.

TMU has three types of Accommodations: Student Dormitory, International House, and International Student House.

## ● Finance support

Finance support		
Entrance examination fee	17,000yen	waiver
Admission fee	282,000yen	waiver
Tuition fee	520,800yen	waiver
Scholarship	月150,000yen	

上記に加え、海外から入学する際には、渡航費を東京都が負担します

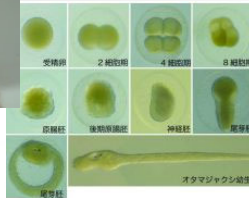
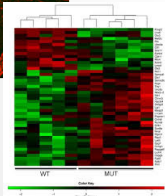
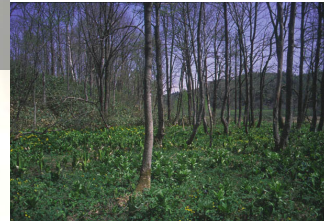
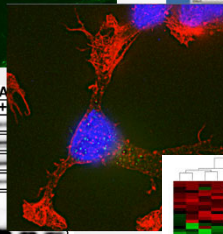
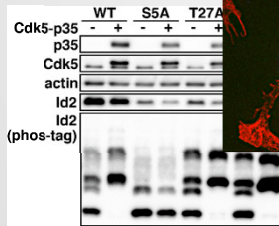
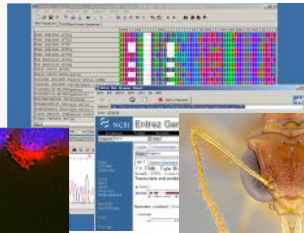
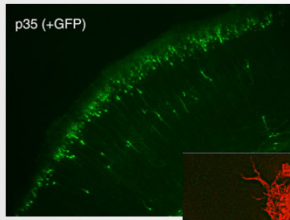


# **Biology English Program**

**A full degree program in English  
at the Department of Biological Sciences,  
Tokyo Metropolitan University**

Kanae Ando  
Associate Professor  
Dept of Biological Sciences  
Faculty of Science  
Tokyo Metropolitan University

# Department of Biological Sciences



## Department of Biological Sciences consists of 15 laboratories

- Molecular Neuroscience
- Developmental Biology
- Cellular Genetics
- Molecular Genetics
- Plant Development and Physiology
- Cellular Biochemistry
- Neurobiology
- Evolutionary Genetics
- Plant Photoregulation
- Environmental Microbiology
- Animal Ecology
- Plant Ecology
- Systematic Zoology
- Systematic Botany
- Photosynthetic Microbial Consortia





## Collections and field station

### ■ Ogasawara Field Research Station

- The station was established in 1971 and has been serving as a base for research and education on the unique nature and culture of these oceanic islands.. Ogasawara is registered as a World Nature Heritage.



### ■ The Makino Herbarium

- Founded in 1958, Makino herbarium is based on the approximately 400,000 plant specimens kept in the private house of the late Dr. Tomitaro Makino (1862-1957), the so-called father of Japanese Botany



### ■ Drosophila Stock Preservation

As one of the largest suppliers of Drosophila in Japan, TMU lineage preservation offer Drosophila melanogaster mutations we also offer as well as large number of wild species and wild strains, specifically, more than 100 species and 3000 strains.

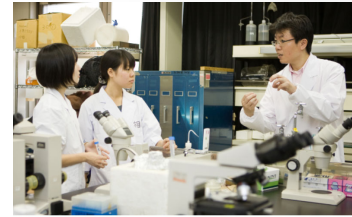




## Undergraduate program

### 1<sup>st</sup> and 2<sup>nd</sup> year

Lectures  
& Laboratory courses  
& independent research



### 3<sup>rd</sup> year

Lectures  
& Laboratory courses  
& Field Practice



### 4<sup>th</sup> year

Laboratory research project

- *In total, more than 50% of hours are dedicated for laboratory or field practices*

Laboratory Course in Taxonomy, Evolutionary Biology, Developmental Biology,, Cell Biology, Ecology, Genetics Biochemistry, Neuroscience, Molecular Biology, Physiology  
Field Practice of Plant Taxonomy, Marine Biology Course (General Biology)  
Field Practice of Animal Taxonomy Marine Biology Course (Physiology & Developmental Biology) Field Work in Ecology Internship in Biology

# ● Student matriculation process



Department of Biological Science  
Entrance exam

**total 124 credits, either in Japanese or English**

Lectures (general)

Lectures (specialized)

Laboratory courses

Independent research

Field courses

undergraduate research

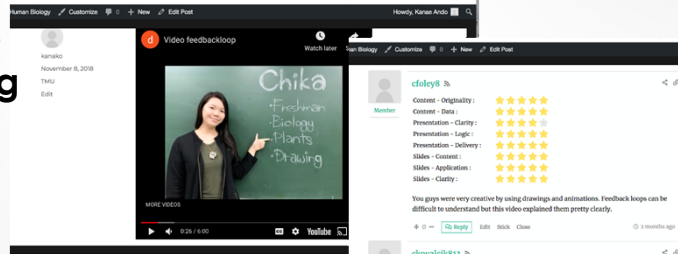
**A Bachelor's Degree in Science**





# Opportunities of international collaborations for students

## ■ Collaborative Online International Learning



## ■ Faculty members invited to give short courses and seminars

## ■ Student visits each other



The courses also frequently include exchange students, allowing Japanese students to collaborate with students from various countries.

● **Graduate program**



**Master degree program (2 years)**

Lectures in the first year  
& Laboratory research



**Ph. D. program (plus 3 years)**

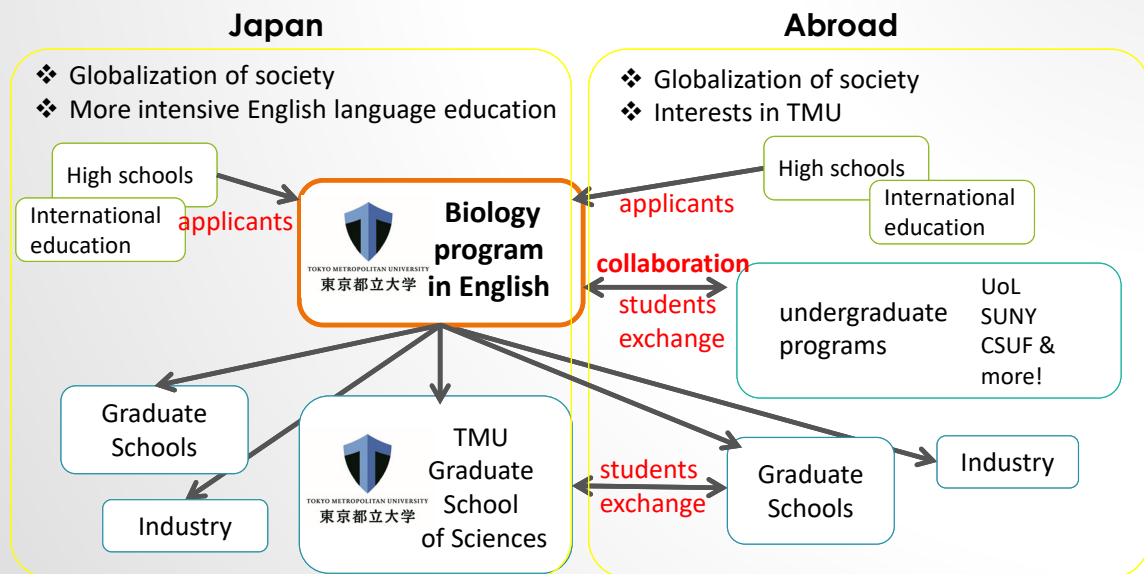
Laboratory research



<https://biology-grad.biol.se.tmu.ac.jp/>



# Domestic & International Collaborations



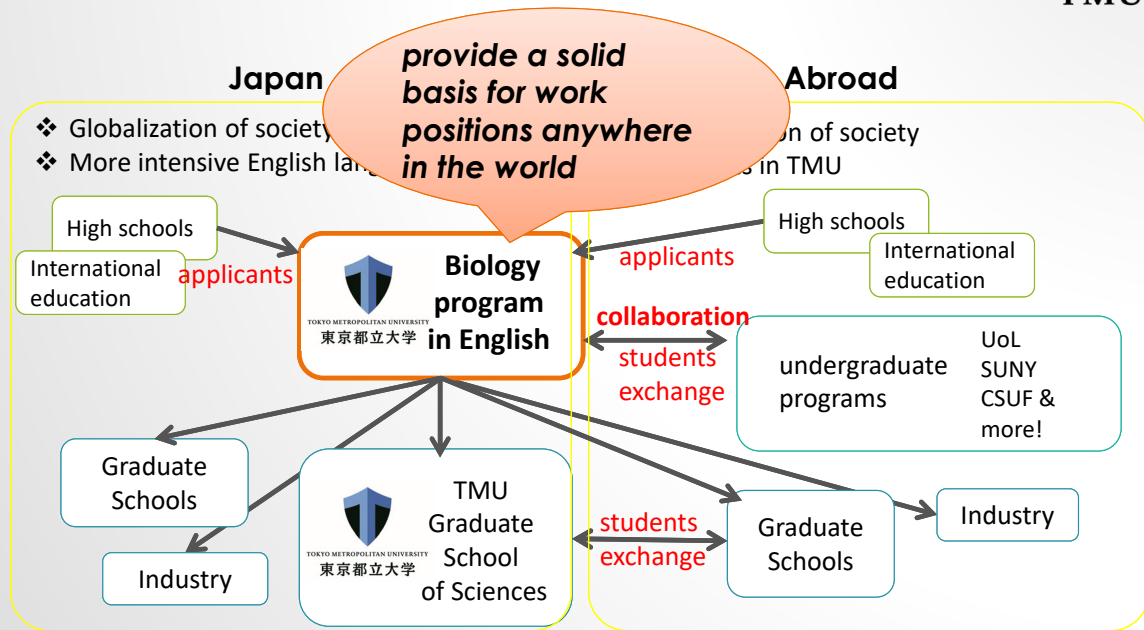
Demands for international experience

The original program contents provided in English.

To satisfy growing demands for higher education in English

To enhance collaboration with the scientific community including universities abroad.

# Domestic & International Collaborations



Demands for international experience  
 The original program contents provided in English.  
 To satisfy growing demands for higher education in English  
 To enhance collaboration with the scientific community including universities abroad.

# Admission

[https://www.tmu.ac.jp/english/study\\_at\\_tmu.html](https://www.tmu.ac.jp/english/study_at_tmu.html)



## Degree-seeking students

### Undergraduate Admissions

Students will earn bachelor's degrees upon graduation once they complete the compulsory subjects and credits required by the schools, departments, and programs.

The admissions test and classes are provided in Japanese. Proficiency in the Japanese language is thus a critical prerequisite for enrollment.

#### • Information for prospective applicants (Academic Year 2023)

- Comprehensive Selection(SAT/ACT Method and IB Method)([📄](#) 384KB)
- Special Selection(Entrance Examination for International Students [Selection Based on a Nationwide University Entrance Examination Score])([📄](#) 389KB)

#### • Application Guidelines (Academic Year 2023)

- Comprehensive Selection(SAT/ACT Method and IB Method)([📄](#) 356KB) Essay form([📄](#) 117KB)
- Special Selection (Entrance Examination for International Students) (Selection based on a Nationwide University Entrance Examination Score) Department of Biological Sciences, Faculty of Science([📄](#) 349KB) Essay form([📄](#) 117KB)



### Graduate Admissions

Since each graduate school manages its own recruitment and screening, students wishing to enroll as graduate students are encouraged to visit the website of the school they are interested in for application guidelines.

[Admission Overview](#) →

20

## <台本>

東京都立大学の入試情報については、こちらのHPをご覧ください。最新の情報を得ることができます。

学部入試では、各学部・学科・課程で定められた必修科目と単位を修得すれば、卒業と同時に学士の学位が得られます。

多くの入学試験や授業は日本語で行われます。生命科学科はほとんど全ての授業が英語で行われています。

また、大学院生については、各研究科が独自に募集・選考を行っています。募集要項は、各研究科のホームページをご覧ください。

Regarding Information of TMU's Admission, please check our HP.

You are able to find latest information.

As for Undergraduate Admissions, Students will earn bachelor's degrees upon graduation once they complete the compulsory subjects and credits required by the schools, departments, and programs. The admissions test and classes are provided in Japanese. Proficiency in the Japanese language is thus a critical prerequisite for enrollment. But, the Department of Biological Sciences, Faculty of Science offers almost all classes in English.

And about Graduate Students, each graduate school manages its own recruitment and screening. Please visit to website of the graduate school which you are interested in for application guidelines.

## ● NEW! Fall enrollment (2024~)

[https://www.tmu.ac.jp/english/study\\_at\\_tmu.html](https://www.tmu.ac.jp/english/study_at_tmu.html)



### Department of Biological Sciences Faculty of Science



**Read this application guidelines carefully before making an application.  
Pay close attention to the application period and procedures.  
All dates and times given in these Guidelines are in Japan time.**

#### Schedule

Application period	April 15 (Mon) – 26 (Fri), 2024
Announcement of the first-stage screening results	May 17 (Fri), 2024
Second-stage of selection	June 17 (Mon), 2024
Announcement of successful applicants	July 3 (Wed), 2024

21

#### <台本>

東京都立大学では、今まで4月入学の入試のみでしたが、10月から入学ができる入試を新たに実施いたします。

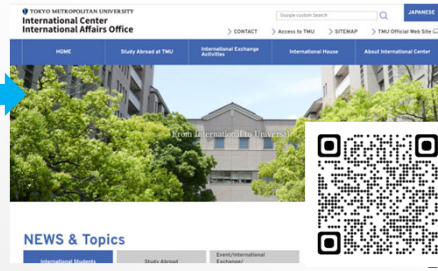
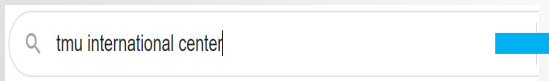
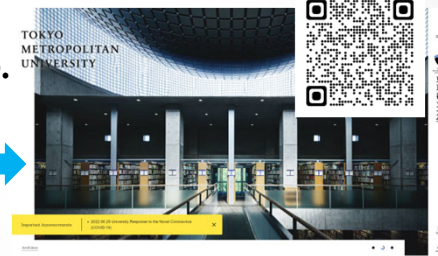
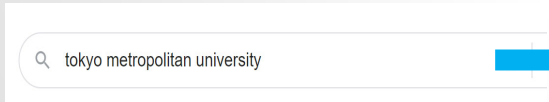
理学部生命科学科で導入します。

2024年4月に出願、合格すれば2024年10月から入学となります。

# ● Learn more about Tokyo Metropolitan University



*You can find various information about TMU from the official website.*



■ Contact : [info-kokusai@jmj.tmu.ac.jp](mailto:info-kokusai@jmj.tmu.ac.jp)

Learn more about Tokyo Metropolitan University, You can find various information about TMU from the official website.